



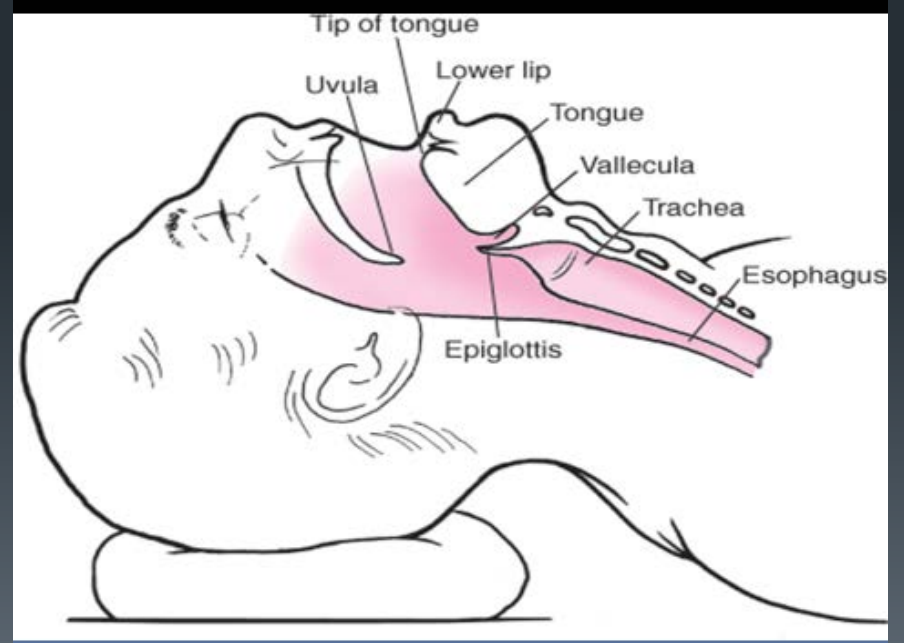
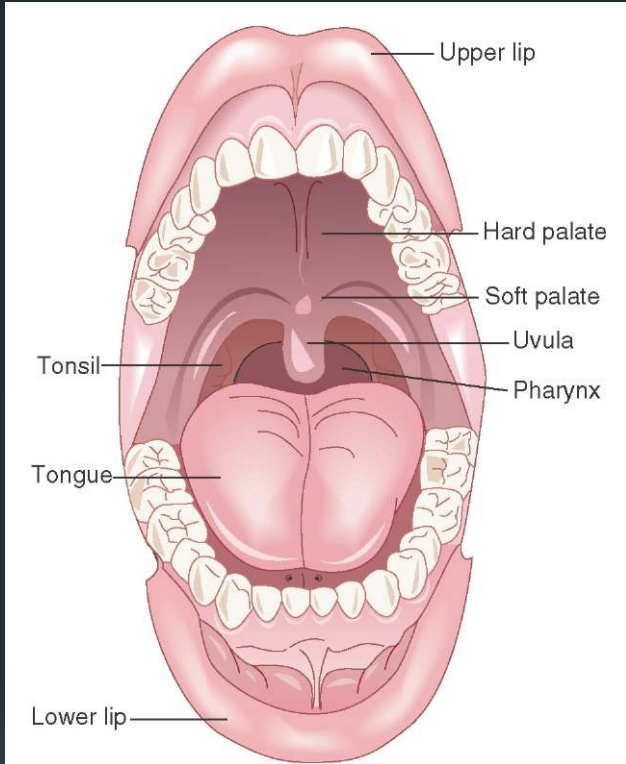
Difficult Airway



TUBE THESE

BECAUSE DESPITE AMAZING ADVANCES IN SCIENCE
YOUR PATIENT CANNOT YET BREATH THROUGH HIS STOMACH





Tube that





The difficult airway

Tips and Tricks



The decision to intubate



The decision to intubate

- Loss of protection
- Lack of oxygenation
- Lack of ventilation

- Impending loss of any of these



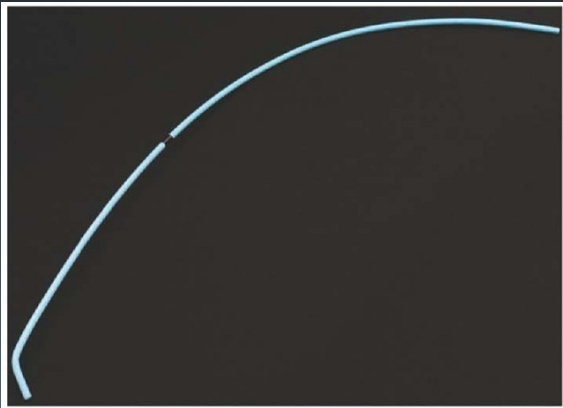
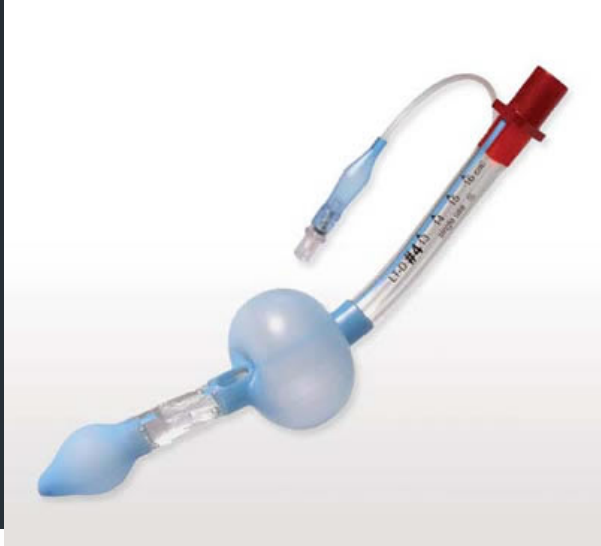
Decision to Intubate

- Failure to protect the airway
 - Gag reflex absent in 25% of normal adults
 - More reliable indicator is:
 - patients ability to swallow
 - handle secretions
 - phonate
 - And their level of alertness
 - GCS < 8



Tools and Tricks

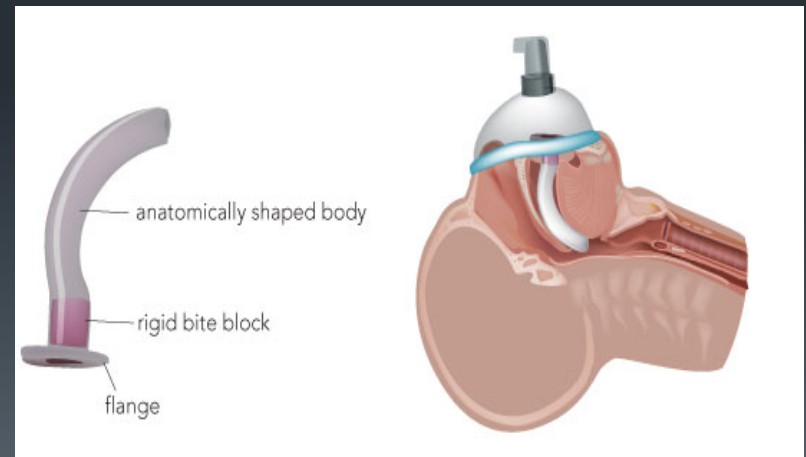
- Preoxygenate
 - Use MASK 15 L
 - Use HIGH FLOW NASAL CANNULA
 - (Passive oxygenation can lengthen time to desaturation by multiple minutes. Annals of EM 2011)



Tools

Don't forget the simple stuff

- Chin lift
- Jaw Thrust
- Oral Airway OPA
- Nasal Trumpet NPA
- Bag Valve Mask



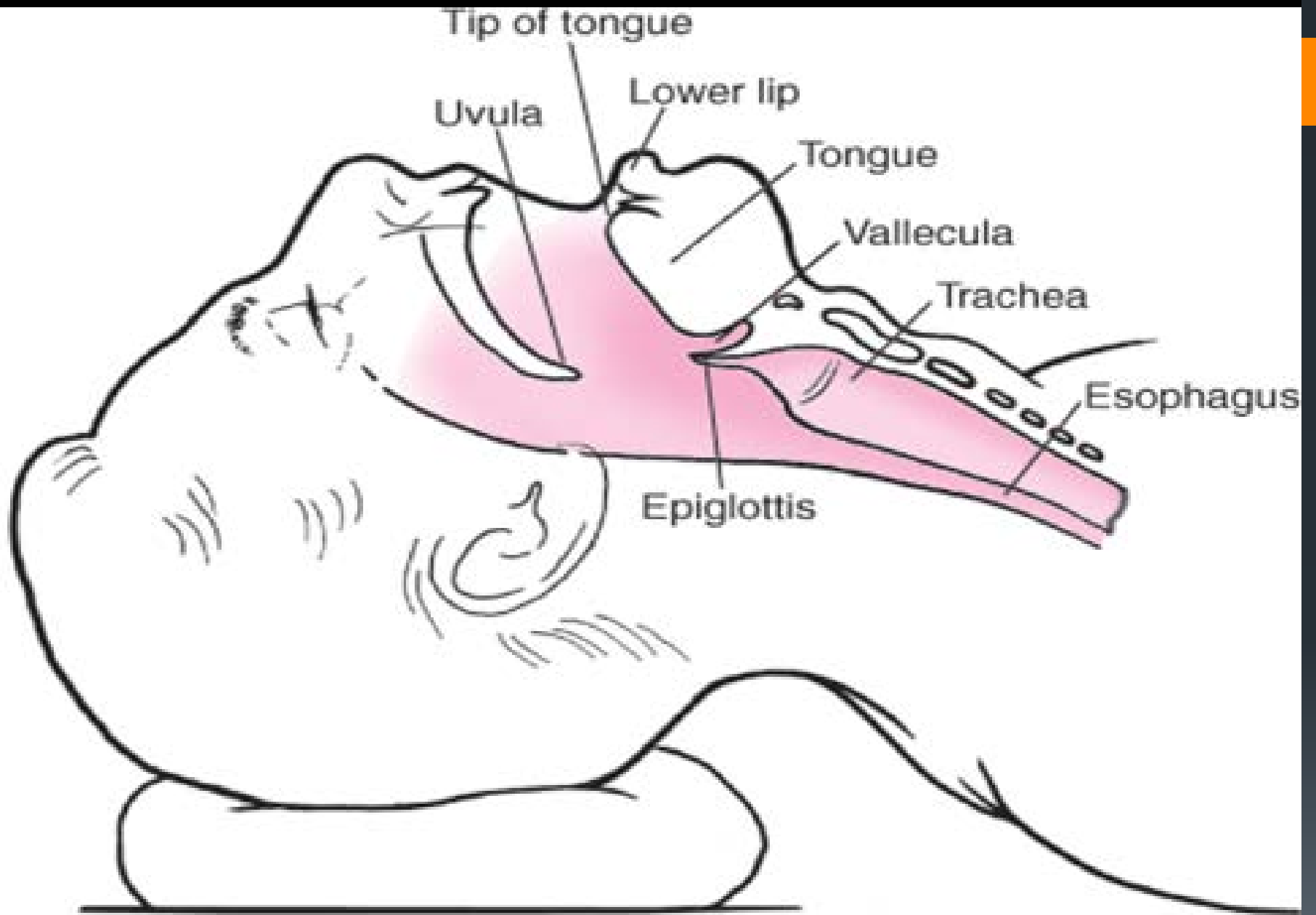
BAG VALVE MASK

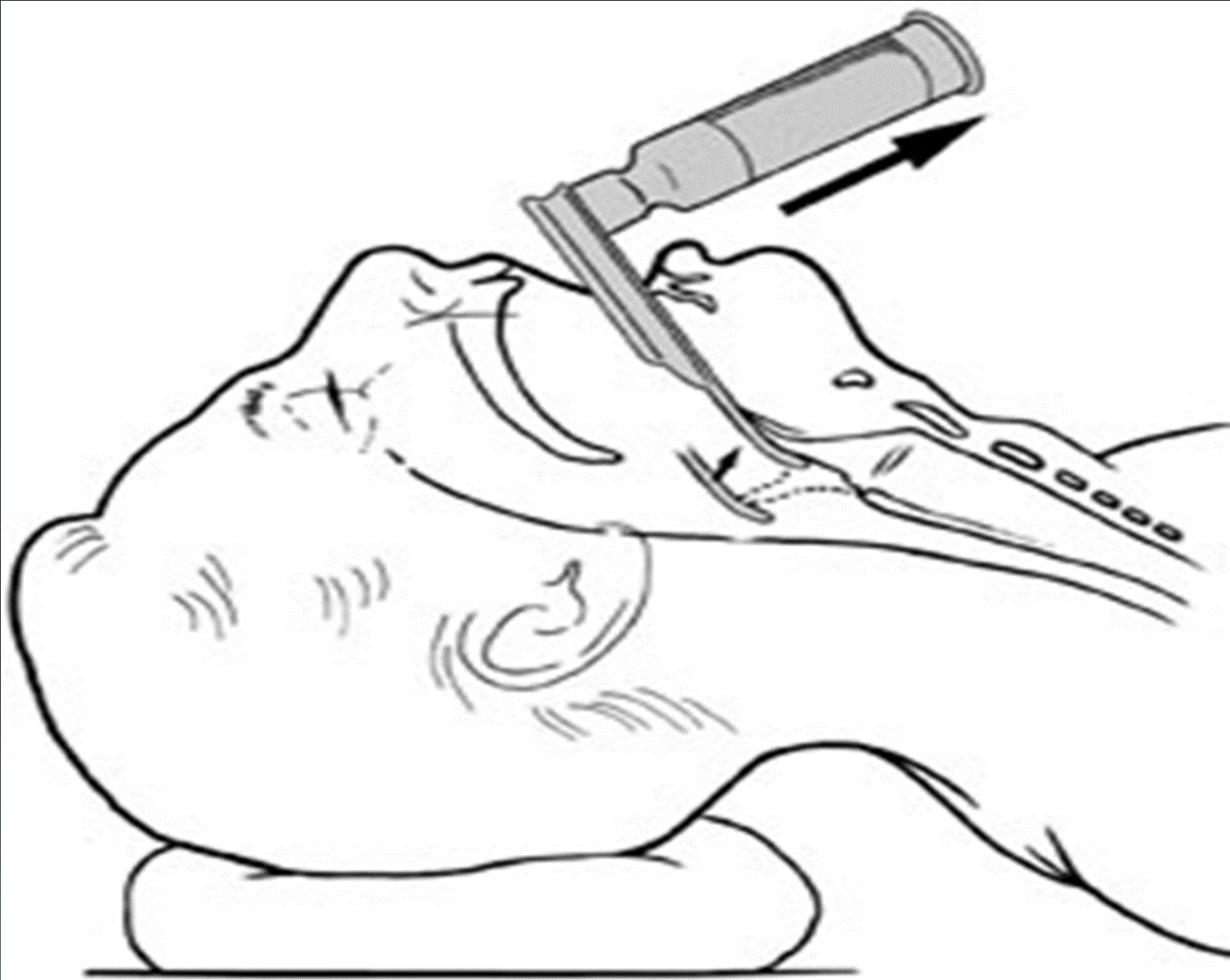
THE MOST UNDER APPRECIATED AIRWAY TOOL

- Leave the patient more upright
- Thumbs up method
- Tube in every hole
 - OPA + Double NPA

Bag Valve Mask Airway

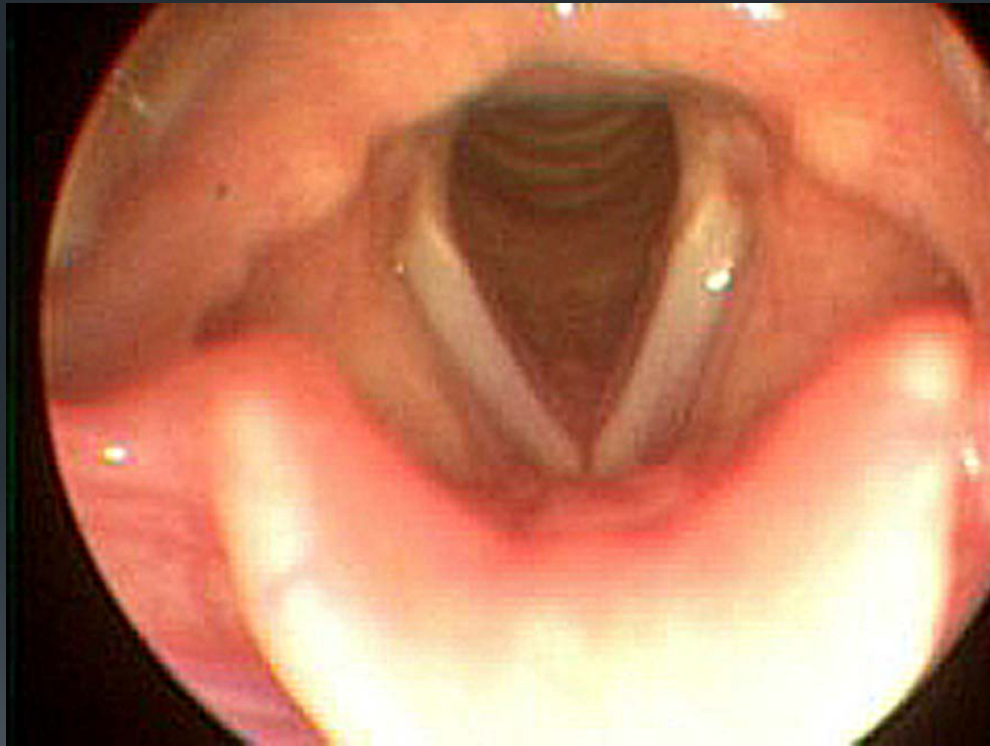






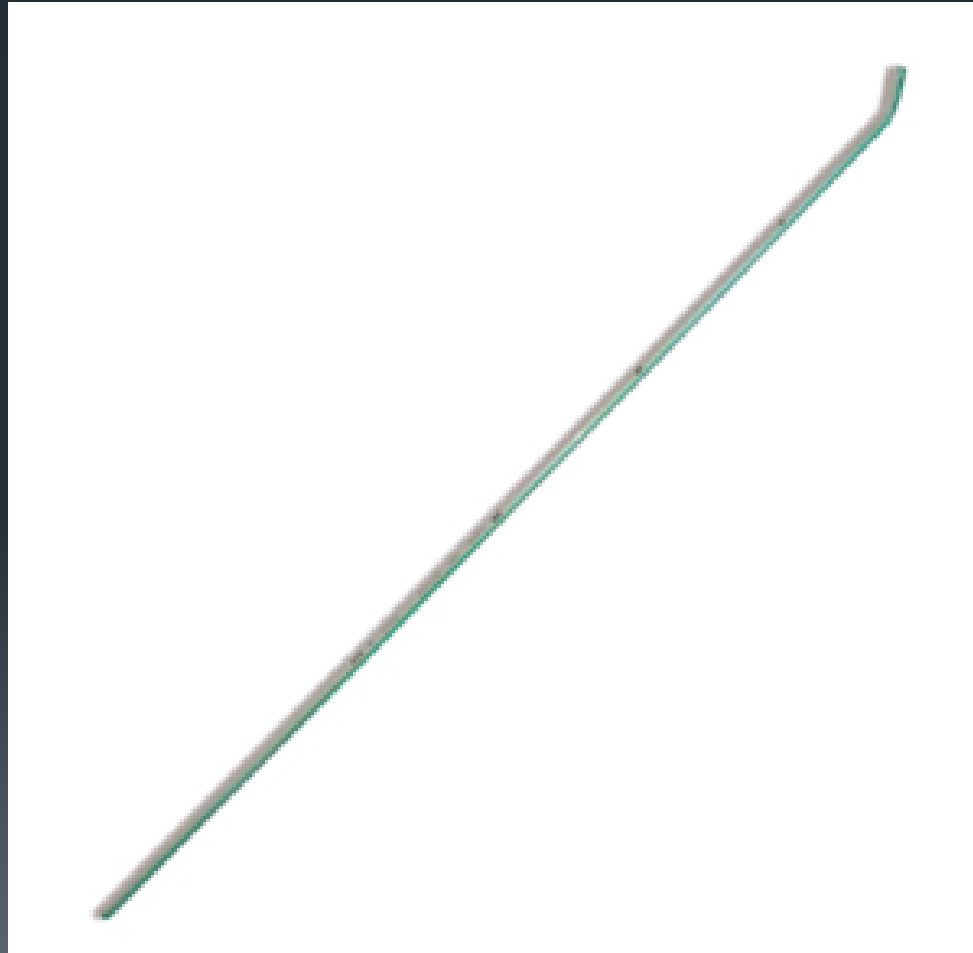


Can't see this?



Bougie

(Endotracheal tube introducer)



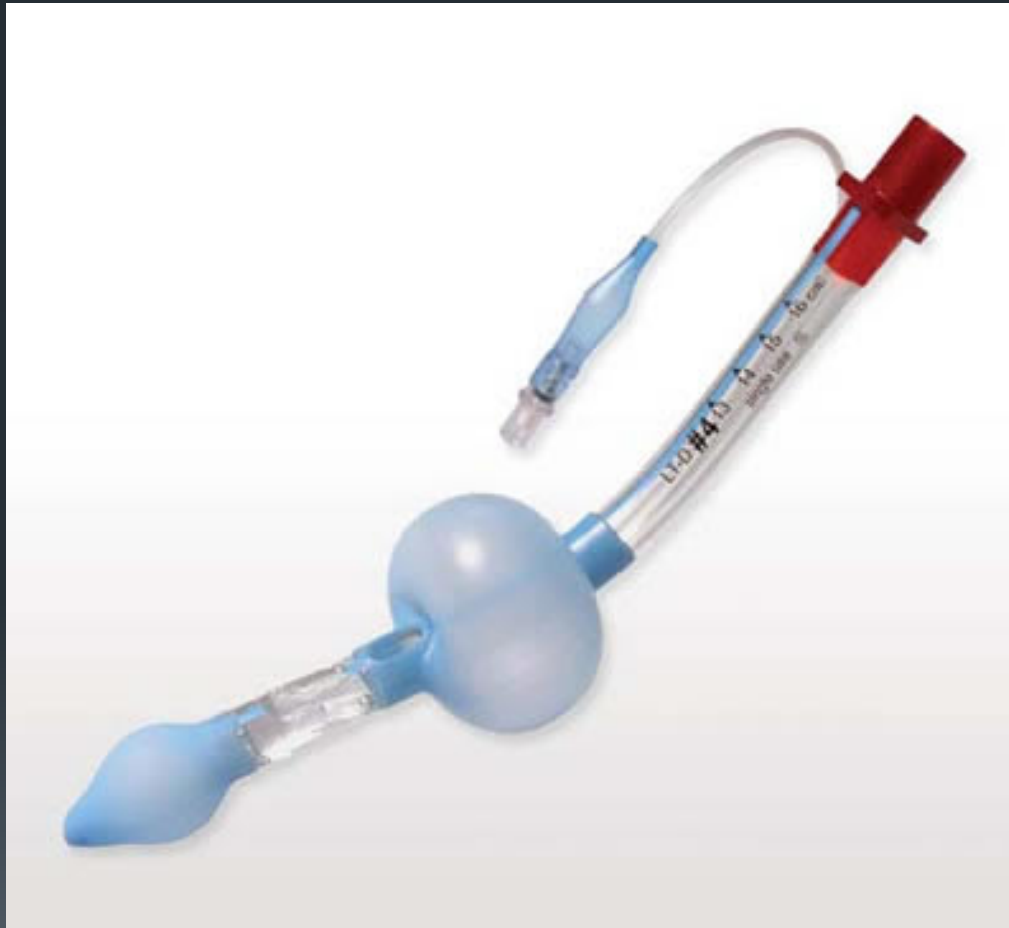
Bougie

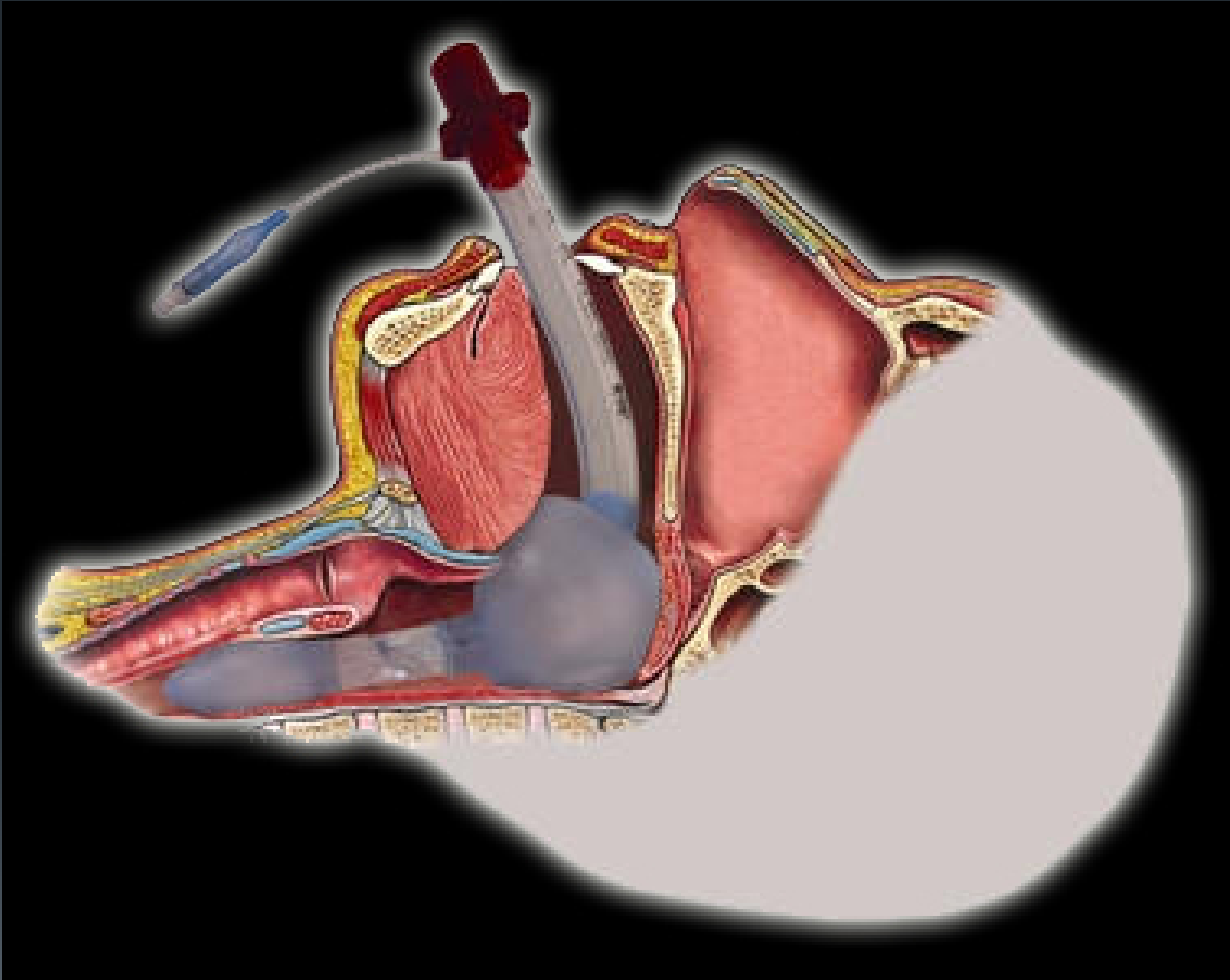


LARYNGEAL MASK AIRWAY



Laryngeal Tube Airway

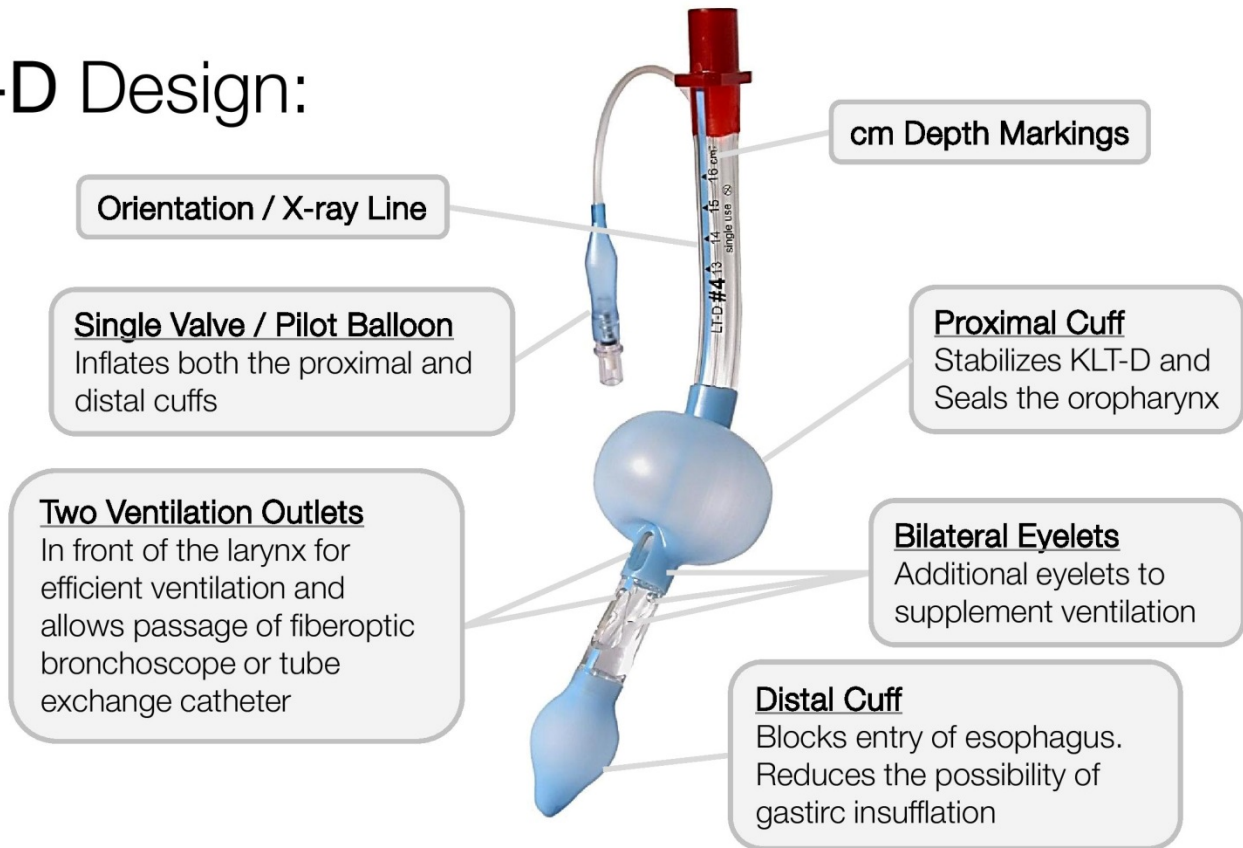




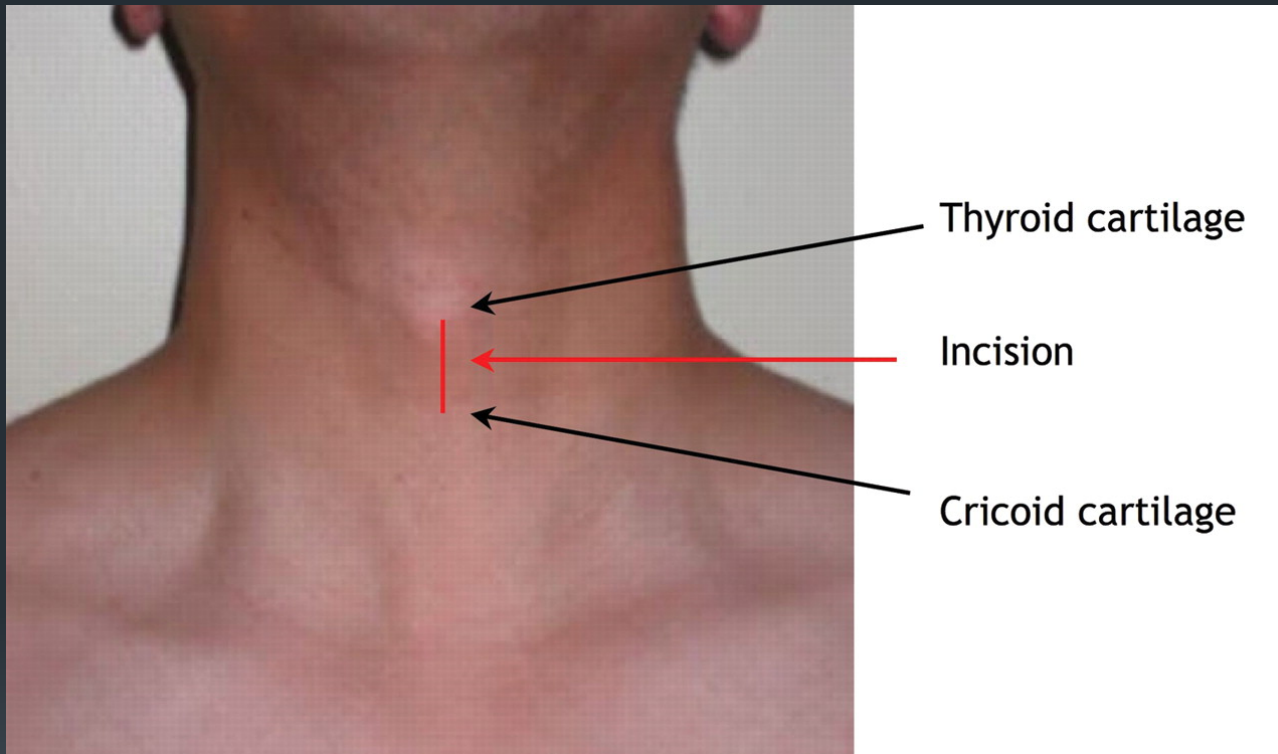
KingLT(S)-D™

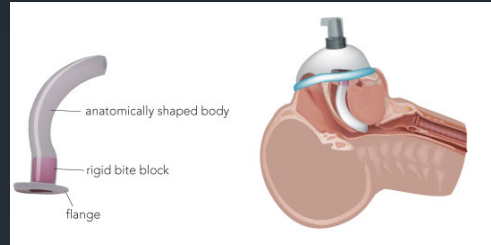
supraglottic airway

KingLT-D Design:



Cricothyrotomy





Difficult Airway

