



Timeline of a stroke

Timeline of a Stroke: Evona Young (Jan 27, 2012)

DAY ONE

10:00 PM Patient went to bed feeling fine

1:00 AM Patient awoke and tried to get out of bed; couldn't move well and her husband recognized signs of stroke: trouble speaking, experiencing right facial droop and right arm and leg weakness. He immediately called 911, communicated the signs of stroke and, although patient lives 45 minutes away, requested his wife be transported to EIRMC.

2:19 AM Patient arrived in EIRMC ER and was treated by Dr. Eric Maughan. He noted difficulty speaking: speech was thick and had right facial droop. Patient unable to move right arm or leg. Within minutes, Dr. Maughan determined a NIHSS score of 17. (National Institute of Health Stroke Scale assessment tool used to score deficits.)

2:35 AM Patient CT scanned.

3:30 AM Scan disclosed type of stroke as ischemic (clot). Patient given intravenous Activase (alteplase, aka tPA, the clot busting medicine) to begin dissolving clot.

3:45 AM Interventional radiologist Dr. Schmutz decided to intervene further. Patient taken to angiography suite to administer additional tPA directly to clot through a small catheter placed in the groin and advanced up to the Middle Cerebral Artery.

6:55 AM Patient moved to Intensive Care Unit from ER.

6:30 PM Patient moving right arm, but still on ventilator (ventilator is normal for patients who have intra-arterial interventions)

DAY TWO

8:00 AM Patient experiencing some generalized weakness

8:00 PM Patient awake and alert, moving arms and legs equally and talking. Experiencing slight difficulty finding words; speech still a little thick. Patient's NIHSS score now 2.

NEXT 7 DAYS Patient moved to 4th floor to continue progress working with therapies and assessments to ensure speech and motor skills are optimal.

DAY NINE Patient discharged to go home. Physician noted no residual impairment from the stroke.

6 MONTHS LATER... Our 56 year old patient is happy, healthy and reports that she couldn't be more pleased with her outcome. Although she finds herself searching for a word now and then, and wildly rocking fishing boats aside, she still does all the same old things she used to.

She is extremely grateful that her husband was able to recognize the signs of stroke, called 911 immediately and communicated her symptoms to EMS. And more than anything, she is grateful her husband knew that EIRMC was the best choice for optimal treatment and care.

When it comes to stroke, all hospitals are not equal. There is no better place than an advanced certified Primary Stroke Center. And in all of eastern Idaho, western Wyoming, southwest Montana, and northern Utah, that place is EIRMC.

Aug. 2012



EIRMC Newsletter for physicians and their staff



Timeline of a Stroke Response

Stroke Team collaboration supports another success story

FEATUREstory

Evona Young of Pingree awoke to get up and use the bathroom, but instead found herself sprawled on the floor waking her husband. Her husband, an EMT, asked a few questions and immediately recognized she was having a stroke. He dialed 911 and, although they live nearer to Blackfoot, he knew of EIRMC's stroke treatment capabilities, and asked that she be taken directly to EIRMC. Smart man.

Evona's massive ischemic stroke could have been devastating. Instead, Evona arrived in time for EIRMC's ER physician, Dr. Eric Maughan, and interventional neuroradiologist, Dr. Fritz Schmutz, to collaborate on a full Primary Stroke response.

Today, Evona is a success story. Instead of merely surviving the stroke, she has no residual effects from the experience and is able to enjoy life just as she always has.

Not all patients are so lucky. Often powerless to help themselves and lacking observant intervention by a loved one,

co-worker, or even a stranger, many stroke events go unnoticed until it's too late. One patient, after lying on the floor for many hours, can remember only that her little dog came to kiss her face every now and then throughout the day. Seldom accompanied by pain other than perhaps a headache, many don't see the symptoms for what they are: a medical emergency.

In 2011, of 165 ischemic strokes seen at EIRMC, only 43 arrived in time for treatment. Therefore EIRMC is taking on an awareness campaign to educate and close the gap between those who arrive in time for the greatest array of treatment options, including IV tPA therapy, and those who don't.

Please help us by educating on the importance of knowing the signs of stroke and having a plan for this medical emergency, especially your patients at higher risk. Really, everyone needs to know the signs and be prepared to help someone else.

EIRMC Physicians' Education Conference

Aug. 3	No Conference
Aug. 10	Dr. Brooke
Aug. 20	Interesting Cases
Aug. 17	Dr. Castellanos
Aug. 24	TBD
Aug. 31	TBD

Eastern Idaho Medical Education Consortium is accredited by the Idaho Medical Association to sponsor category one continuing medical education for physicians.

All classes are Friday at 7:30 a.m. at EIRMC, Classrooms A & B.

For more information, contact: Shanna Hardman, Medical Staff Asst. (208) 529-6260 shanna.hardman@hcahealthcare.com

Continued back cover

2012 Physician Picnic

What: New Doc on the Block Picnic
When: Wednesday, September 5
Time: 6:00 - 8:00 pm
Where: Sunny Side Park Shelter (across from the hospital)



Bring your families out to enjoy an evening picnic on EIRMC! Catch up with your colleagues and their families as you meet and greet new EIRMC physicians and welcome them to the hospital.

Are You Tough Enough to Wear Pink?

The War Bonnet Roundup is Here!

And we're giving you 8 seconds to read this.

What: EIRMC Night at the War Bonnet Rodeo
When: August 3, 2012
Time: 7:00pm (gates open at 5:30pm)
Where: Sandy Downs (at 1860 E. 65th S.)



EIRMC is sponsoring Friday night's Tough Enough to Wear Pink War Bonnet rodeo festivities. So pull on your boots, put on some pink, and come on out and support EIRMC and breast cancer awareness at this family friendly event that raises funds to support breast cancer charities in our communities. Take the challenge. Let's show eastern Idaho that EIRMC physicians are all Tough Enough to Wear Pink.

New Faces: Ours and Yours.

Meet your newest colleagues and keep abreast of EIRMC's new hires and promotions.

Physicians who joined the Medical Staff this Year.

The hospital is fortunate to have such a large pool of talented physicians. Regionally, our medical staff is beyond compare, and we are privileged to welcome 14 more! To support you, EIRMC is continually striving to promote and hire the best and brightest in hospital administrative leadership as we work together to improve the patient experience.



Charles Knight, MD - Hospitalist
American Board of Internal Medicine
208.227.2575



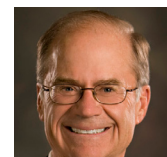
Rodney Bates, DO – Hospitalist
American Osteopathic Board Internal Medicine
208.227.2575



Dane Dickson, MD - Hematology/Oncology
American Board Internal Medicine (Medical Oncology)
208.557.2426



Dirk Bigler, MD - Radiologist
American Board of Radiology (Diagnostics)
208.356.3691



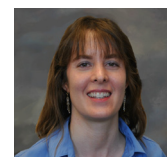
David Hansen, MD – Radiologist
American Board Radiology (Diagnostics)
208.356.3691



Mark Greenfield, MD - Pain Medicine
American Board Anesthesiology
208.523.7246



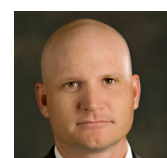
Matthew Robison, DO - OB/GYN
American Board Obstetrics & Gynecology (eligible)
208.557.2900



Rebecca Shanesmith, MD - Pathology
American Board Pathology
208.529.6050



Jerry Smedley, DO - Emergency Medicine
American Board Emergency Medicine (eligible)
208.227.2000



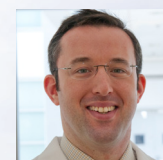
Justin Lamb, DO - Radiologist
American Osteopathic Board Radiology (Diagnostic Radiology)
American Osteopathic Board Radiology (CAQ - Neuroradiology)
208.356.3691



Nathan Adams, DO - Hematology/
Oncology
American Board of Internal Medicine
(eligible Hematology/Oncology)
208.523.1100



Brandon Bloxham, DO - Emergency
Medicine
American Osteopathic Board Emergency
Medicine (eligible)
208.227.2000



Brandon Kelly, MD - Neurosurgery
American Board Neurological Surgery
(eligible)
205.552.6210



Robyn Borghese, MD – Neonatologist
American Board Pediatrics
(Neonatology eligible)
208.535.4591

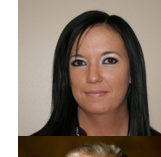
Hospital Directors or Managers newly hired or promoted.



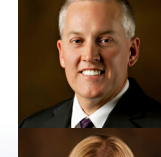
Lorri Anderson
Manager Women's Center



Travis Evans
Director Medical/Neuro/Oncology



Jennifer Gohr
Manager PAS



Rick Goodwin
Director Program Development



Holly Gyles
Director Volunteer Services



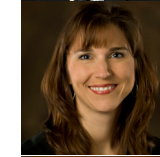
Bob Hale
Director IT&S



Jim Howard
Director Access



Scott Lambertsen
Director Cardiovascular Services



Mileen Langley
Director Therapy Services



Chris Youngberg
Clinical Manager of Child and Adolescent
Services

